

Waverley Woodworkers Inc.

February 2023

Newsletter

Volume 31, Issue 2

Central Reserve, Under the Grandstand
Springvale Road, Glen Waverley 3150
Phone 9807 9648

www.waverleywoodworkers.com
ABN: 458 367 522 81



Our Mission : To create wood craft items in a supporting, diverse, friendly, sharing environment.

From the President—Ray Ffrench

New Workbench



John Watson, George Gregson and I have been building a new workbench. Vic Ash and Jarrah, It is about 1500mm long and 600mm wide. It is 1000 high. It has been given a coat of Linseed oil.

The feedback is that the 1000mm high workbench is more comfortable to work at. ...less bending, the top shelf is higher and it has a 'tool tray'. John, George and I will continue to making work benches during the Friday morning session, gradually replacing the older benches. The new ones will be about 1300x600x1000.



Many Thanks - Norman Bye



If you joined the club in the last 5 years (that is about half of our members), then you have been inducted into the club in one of Normans Induction sessions. Norm's focus on Safety has ensured that we can all enjoyed our fantastic facility knowing how to use the machines in such a way that we all remain safe. The big statistic is that we not had any MAJOR Incident on any of the machines where a member has been injured.

Norm will continue to be seen around the club, doing maintenance on the machines, participating in the Toy Group and getting on with his own projects.



Pinewood

Community
Bank® Branch



Waverley Woodworkers wish to thank for your ongoing support for our projects.

65 Centreway, Mount Waverley VIC 3149

Phone: (03) 9886 6477

What was that you said?

Since we moved into our new location we have been concerned about the **noise level**, especially when multiple 'noisy' machines are going at the same time. Over the Christmas/New Year break, **Ian Bell and some other committee members** did a comprehensive series of noise test using a calibrated noise meter. The results were that at times the noise levels were too high to be comfortable and could be damaging to hearing.

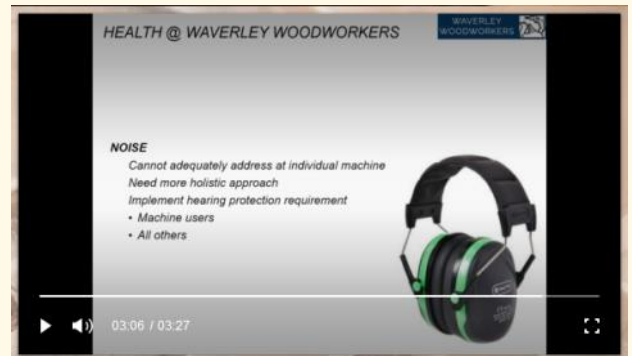
The Committee has decided to make the wearing of Hearing Protection Mandatory while in the workshop areas. **This will be effective from April 1st this year.**

To facilitate this decision, every member will be **given a pair of Class 5 Ear Muffs**. These will be acquired in February and we will hand them out as soon as possible.

Thanks to **Ian Bell**, we have this **3.5 minute video** that shows why we need to take serious action.

please click the link here

<https://www.waverleywoodworkers.com/projects-2>



Health Statement

Over the last 3 years we have learned a lot about keeping ourselves healthy. Lockdowns, vaccinations, wearing masks, social distancing and the use of hand sanitizers have enabled to keep doing what we like to do.

We no longer need to operate under any restrictions, however those nasty virus's are still around so we need to be mindful that we are all vulnerable. It is not just COVID that can spread quickly, so can the common cold, the Flu and a host of other respiratory conditions.

The Waverley Woodworks position is quite clear.

1. If you are healthy, come to the club and use the facilities. Use the Hand Sanitizer by the office door, and wear a mask if you want.
2. If you have a sore throat, a high temperature, a cough, the sniffles, or a head ache **please stay away** until you are feeling better or you are sure you are not contagious.



Waverley Woodworkers wish to thank **Bunnings** for ongoing support for support of our Community Projects of Toys for Kids.

The toy group is gradually getting back into action for 2023. Had a brief meeting about plans and material requirements on the 17th January. A few members are back to work but it will be another week or two before we are close to full swing again.

Brian Downie

Dear Members,

You will receive an email soon asking you to update your WW member details so we can confirm our membership records are correct.

Please take just a moment and click reply stating your name, mobile number, address and emergency contact name and number. We will update our records accordingly.

Many Thanks

Ian Holt

Wood Carving

Are you interested in learning wood carving or participating in the carving group?

If so please contact Frank Duyker on:

frankduyker@bigpond.com or 0414039483



Welcome new club members



Andrew Newham, John Evans, Nikhil Medhekar, Mark Heland and Richard Pullin

have attended the Safety Induction over the past month.

Our new members need encouraging advice and support with

how to do their projects in a safe way.



Waverley Woodworkers wish to thank **Senator Raff Ciccone** for his ongoing support especially with the printing of club documents.

1A Blackburn Rd, Blackburn

VIC 3130 Phone: (03) 9894 2098

New Member Inductions – Following on from Ray’s article above, I would like to add my personal thanks To **Norman Bye** for his significant efforts over a long period inducting all new members into the club. This volunteer work is typical of Norm and the results speak for themselves. Thankyou Norm!

Volunteers / Recognition Lunch – The next lunch is to recognise our Life Members, Retired Members and also members over 80 years of age (our seniors!) and will be held at the club on **Monday 27 Feb at 12:30**.

Personal invites will be sent out shortly.

Club Nights – For 2023 the first will be held on the **8th March**. We propose to hold 6 this year with dates to be confirmed.

As you know we always try to have an interesting guest speaker, including members who may have a story to tell, share a hobby, etc. So – if you fit this description OR know of someone who may like to come along and share their experiences please let me know on 0419696022.

“Help a Buddy Out” – One of our members noticed another men’s shed that had this idea. Do you have a need for assistance with something at times – it could be as simple as getting a lift somewhere or a helping hand to move furniture, etc. (the list is endless!) We are looking at setting up a simple contact process to cater for this – it would need someone to volunteer to be the co-ordinator so if you are keen give me a call on 0419696022.

Router Table Upgrade is coming - The workshop router and router lift plate assembly are going to be replaced in February. We have purchased a spindle motor and a 4 post lift which will require refresher use sessions to duty members and general members. Further info will be provided as we introduce it into work.

Drum Sander – we have had continuing issues with damage / tearing of the rear drum’s abrasive. Not only does this cause disruption and down time but could lead to workpiece damage. Also continually replacing the abrasive is not cheap.

We have now isolated the back drum and only have the front drum operational for the next 3 months or so. Currently there is 120 Grit abrasive fitted but depending on feedback we may replace with 180 Grit.

Note - When raising the table it is recommended that half a graduation be used and your workpiece should be fed in twice at each change of feed table height. Feed thru once and then rotate your workpiece 180 degrees and feed thru again.

Use of the Planer/Thicknesser - The maintenance team has noticed some further scratching damage to the table and also a build-up of glue on the feed pressure rollers.

It is a requirement that members **use the metal detector** to carefully check for nails, screws, staples, etc. on all reclaimed timber so please ensure you follow this simple but effective procedure.

All glued up projects must be fully dry and all glue build up must be removed prior to using the thicknesser – chisels are available on the rack to assist with this.

Following these procedures will ensure the machine is fit for use and minimise possible damage and maintenance effort.

New Projects – The **new workbench** is now complete. Thanks to Ray Ffrench, John Watson and George Gregson for producing such a great bench.

New and improved table saw sleds are currently being built thanks to Jan Lacki. These will be available late this month.

Upgrading the large assembly table is yet to be done but this is still on the priority list!

Member Name Badge – Don't forget - members who do not have their name badge should collect from the holder in the office. Please keep it with your personal kit and **wear it at all times while at the club.**

Free timber available – Just a further reminder – We have a range of donated timber at the rear of the driveway. Please help yourself if you think you can use it to make something!!

Items Free or for Sale – We now have a **shelf unit in the office to display available items** – please have a look and grab a bargain. Payment for sale items can be by cash (place in an envelope with your details on the front and put in the box on the sign in shelf)

Sharpening Training Workshop (Final Reminder)

I had only one (1) name (Ian Bell) so far, until a member recently removed my notice from the club noticeboard. If your name was on this list or you wish to participate, please ring Peter Clunas 98079440.

During 2022, I initiated a member system to determine if chisels or plane irons required attention, sharpening. There are notices to this affect.

For plane irons, there are plastic tags available to leave on a particular plane, or for chisels, there is a rack available for leaving chisels to sharpen.

These are checked every week and so far there has been not one response. Does this indicate the members interpretation of what is meant by sharp. I have trained up to 50% of current members.

*I will **now** only sharpen blunt tools that are left in these areas.*

Please leave planes and chisels in their designated spots for the convenience of your fellow members.

Thanks

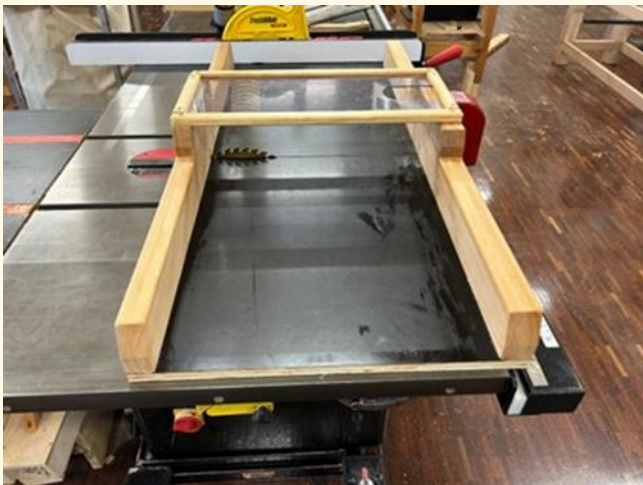
Peter Clunas

I have taken some time over the Christmas break to make a new cross cut sled for club use. In doing so, I have increased the capacity to enable **cross cuts of up to 400 mm** which should provide members the opportunity to handle those wider than normal cutting boards or shelf components.

This new sled replaces the one I built about 6 years ago.

Safety considerations:

- **Please bear in mind** that the sled is for 90 degree cuts only. **DO NOT** try and make ANY angle cuts.
- Under **no circumstances** are members to remove the run-out safety stops from the table saw. We have previously had a club member who removed the safety stops and by doing so conducted unsafe cross cutting resulting in blade exposure beyond the back of the rear (red). That also resulted in damage to the sled (both the 90 and 45 degree sleds).
- **Do not** modify the sled – it has been built for a purpose.
- The sled is heavy - if you feel it is too heavy to place on the table saw.... Then get help. The sled has mass for a reason which is to provide stability for precise cutting.



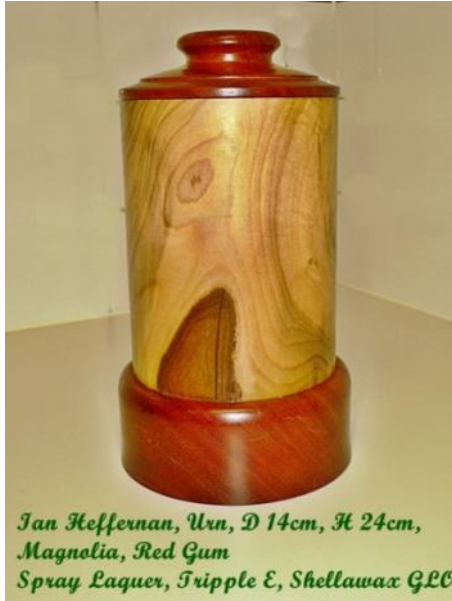
Alex Chin

1. Floating American Oak bookshelf in a mid century modern style.
2. Laser cut Great Wave of Kanagawa with a walnut frame with oak splines
3. Tasmanian oak coasters with resin inlay



Special Interest Group Turning

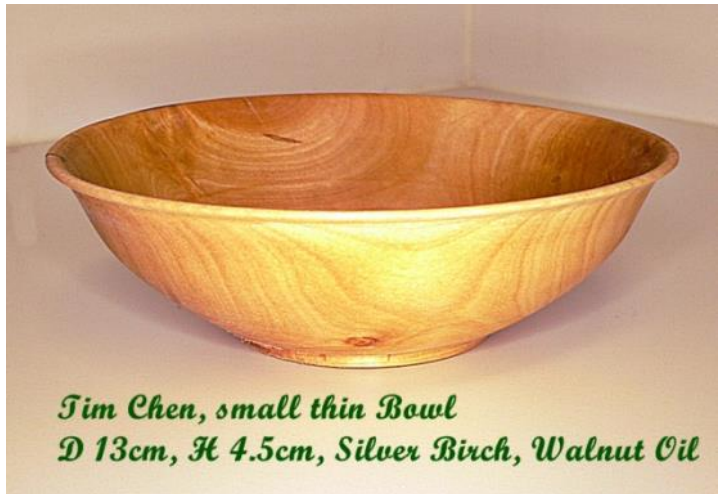
SHOW & TELL – January 2023



*Jan Heffernan, Urn, D 14cm, H 24cm,
Magnolia, Red Gum
Spray Laquer, Tripple E, Shellawax GLO*



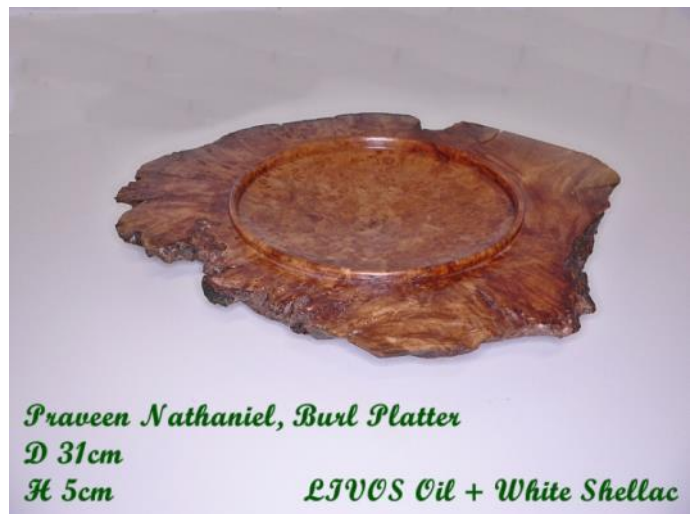
*Hans Kopp, ornamental christmas trees
3.0 - 4.5 cm, Pine, laquer+spray paint*



*Tim Chen, small thin Bowl
D 13cm, H 4.5cm, Silver Birch, Walnut Oil*



*Peter Kerr
PROXXON, high precision, mini drop saw for segment cutting
[from Hobbytools in Breaside]*



*Praveen Nathaniel, Burl Platter
D 31cm
H 5cm
LJUCS Oil + White Shellac*

edit. W.B.

COMMITTEE 2022- 2023	
Executive	Position
Ray Ffrench	President - Sponsor / Fundraising
Jan Lacki	Vice President
John Watson	Secretary, Public Officer
David Keynton	Treasurer
Committee	
Tony Lowry	Workshop Operations Co-ordinator
Trevor Brooks	Box Kits Co-ordinator—Workshop Environment
Felix Karmel	Duty Member Co-ordinator
Ian Holt	Membership, Workshop Video's
Ian Bell	Web co-ordinator
Others	
Norman Bye	Machine Maintenance, New member Induction
Brian Downie	Toy Group Co-ordinator
Alex Chin	Technology Support
Thanh Duong	Monthly newsletter
Tom Phillips	Council of Woodworking Clubs Delegate
Peter Clunas	Hand Tool Sharpening
Geoff Allen	Wood Turning Classes
Frank Duyker	Wood Carving Classes

For all enquiry, please send email to Waverleywoodworkersinfo@gmail.com

Other Sponsors

Waverley Woodworkers would like to thank the following individuals and organizations who provide the extra support needed to ensure our club remains successful.



Matt Fregon
MP Ashwood



John Mullahy
MP Glen Waverley



Steve Dimopoulos
MP Oakleigh