

Our Mission : To create wood craft items in a supporting, diverse, friendly, sharing environment.

From the President—Ray Ffrench

Visit by Senator Raff Ciccone

On Monday the 19th of September **Senator Ciccone** came to the club for about an hour. There was lots of interaction with the 10 members who were present. He was particularly interested in how our Solar installation was going. His office does most of the clubs printing and he donated \$1,000 towards our solar installation. Thanks for all of your support.



Welcome new club members **James Porteous & Mike Larson-Pope**



*have attended the Safety Induction
over the past month.*

*Our new members need encouraging advice and support
with how to do their projects in a safe way.*

New 75" Smart TV in the meeting room

Thanks to a **Grant from the AMSA and the Federal Government** we have been able to acquire this **Samsung TV** and it is ready to go with PC attachment, USB support and Internet connected. It is just what we need for Club Nights and other social occasions.



Club closed for the mourning of Queen Elizabeth II

With the club closed for the day, the question was asked 'Don't we usually open on Public Holidays?'. This was a one off holiday and the committee decided that closing for the day was an appropriate mark of respect.



By the way, the **club is closed on New Years Day, Anzac Day, Good Friday, Christmas Day and Boxing Day**. We are **open** on Australia Day, Labour Day, Easter Monday, Queens (Kings) Birthday Holiday, Grand Final Holiday and Melbourne Cup Day.

Club Display Cabinet

Thanks to **Jan Lacki** and **Bradley Peterson** for building the display cabinet to showcase some of members' woodwork. It is currently located above the Gem Stone display cabinet and next to the doorway of the mural hallway.



Waverley Woodworkers wish to thank **Bunnings** for ongoing support for support of our Community Projects of Toys for Kids.

2022 Annual General Meeting Summary

The AGM is the closing of last year, the reviewing what we did, and a chance to thank everyone who helped make the club what it is today.

There was a *changing of the guard on the committee* with **Tony McLachlan, Kevin Shannon and Brian Downie** all stepping down from the committee. Big thanks to all three.

We welcomed onto the committee **David Keynton as Treasurer, Jan Lacki as Vice President and Ian Bell.**

The AGM was followed by a yummy lunch. *Thanks to all those who bought a plate of food to share.* It was much appreciated.



Pinewood
Community
Bank® Branch
 Bendigo Bank

Waverley Woodworkers wish to thank for your ongoing support for our projects.

65 Centreway, Mount Waverley VIC 3149

Phone: (03) 9886 6477

The toy group continues to flourish with several new members having joined recently.

Preparations are well under way for a presentation to **four Kinders / Play Groups during Spring**. Details not resolved yet but there are certainly plenty of toys available and the toy boxes will be finished within a few weeks.

We recently delivered **70 ply flowers to Mulgrave Primary for the "Class of 2022"**. This is the fifth year we have done this and the pictures show the nearly **200 examples affixed to the walls outside the Art Room**.



Waverley Woodworkers wish to thank **Senator Raff Ciccone** for his ongoing support especially with the printing of club documents.

1A Blackburn Rd, Blackburn

VIC 3130 Phone: (03) 9894 2098

24 members attended a spring night. - Club Night September 14th 2022

Ray updated the members on the technology grant and the purchase of the new smart TV for the meeting room as well as the, soon to be purchased, computer for the office.

The AGM is set for Sunday Oct 2nd

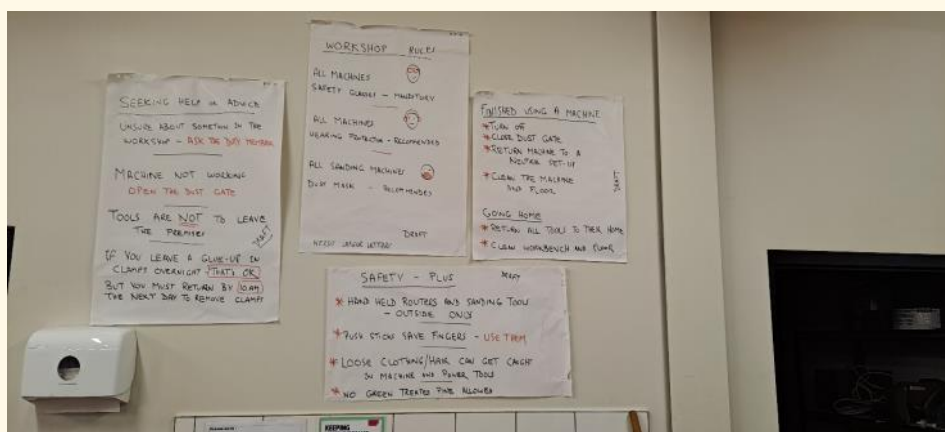
Member **Lawrence Molloy** who works for the **State Energy Office** presented an excellent talk on “**Strategy to transition out of coal to renewable energy**” This included great information on the growth of solar power and the challenges of storing power when the sun goes down, as well as wind, hydrogen and hydroelectric power generation.

Workshop Operations

Tony Lowry

New Signage being developed for the clubrooms

The Committee is working on a **new set of signs** for the club concentrating on simple and consistent messaging; you may have seen the initial draft signs above the sink. **Feel free to provide and comments / input – just put any comments in the book in the office (with your name please).**



Thickness Cutter damage

All the cutters were rotated to a new face on Friday 23/9. Sometime between Saturday and Tuesday morning this happened – we cannot confirm if it was due to metal passing through the machine or a failure of this cutter. **9 other cutters were damaged** probably due to the missing piece breaking up and flying around the head unit. It would be good to hear from anyone who noticed anything unusual!!



Update on machine maintenance

*During September the drop saw and table saw had the blades changed to newly sharpened ones and the planer had all cutters indexed to new cutting faces. Norm and I welcomed **George Gregson** to our team too.*

Free timber available – Just a reminder

*The club received a donation of old growth **Oregon timber** recently; it is located in the drive under the workbench – contact me on 0419 696 022 if you want some – first come basis!*

Reminders and Tips:

*Members are reminded that it is the responsibility of each of us to clean up properly around any machines you use. Do not leave it to the Duty Member. **Additional Dust Pans and brushes** have been placed around the shop – please use them but remember to put them back where they belong.*

Remember to return machine setting to the “normal position” when you complete your tasks (e.g. If you removed the table saw safety guard to use a crosscut sled – put the sled back and refit the safety guard and dust extractor hose, etc).

Please note that when cleaning up / washing brushes and cloths following a project glue up note that there is a tub on the bench for washing into – DO NOT empty down the sink but disperse the liquid over the mulch outside.

Where you have a workpiece glued and clamped and left overnight at the workshop it is your responsibility to return at the next session and unclamp and not leave works in progress on benches. This ensures all members have access to clamps and workbenches without having to move your project.

I always find the club newsletter very interesting and particularly the article in the September newsletter showing the craftsman ship of Alex Chin in producing a Drill Bench Angle Board for member use. It got me thinking about those pieces of “support” equipment the club has scattered around the workshop and in particular, the role clamping vises play in providing “the third hand” that we so often need when performing an operation. I am always amazed that so many items have evolved over time and have been specially refined since the industrial revolution (start approx 1760) such that no one today thinks much about the role they play and their various features. eg. vices and clamps.

The following is a brief text about club vises that members may not be aware of:



Fig 1 left shows the club’s steel tilt vise incorporating a build-in angular scale so that you can directly set a zero to 90 deg angle for many different operations but mostly drilling/machining. The steel jaws are ~125mm wide and you can clamp up to ~110 mm width. Because of its overall height it is best used on the long-column pedestal drill. Depending on what you are doing, the vise can be clamped to the table using the provided T-slot clamps housed at the drill.



Fig 2 left shows a typical steel wood workers bench screw vise with hard timber jaws. This particular vise is fitted with a quick action front jaw which is activated by lifting the lower lever to disengage the screw half nuts and sliding the front jaw out to the position you want. Pushing the lever down re-engages the half nuts and the jaw can be tightened. The action is possible because the vise is fitted with a buttress thread screw/half nut arrangement. Similar vises without the quick action function are fitted with a square or acme screw thread/solid nut combination.



Fig 3 left shows the type of wood workers classical vice of the past with large hard wooden jaws usually with a single metal screw and the guide rails anchored on the front face. A romantic piece of nostalgia for the timber crafts person. Having a wide and sturdy timber jaw, larger pieces of timber are easily clamped. Because of the basic timber construction however, these vises usually have long winding handles to develop the necessary force to clamp securely without breaking the handle! Be patient if you want to clamp a small object!



Fig 4 left shows what is generally known as an **engineer vise**. They come in various jaw widths and casting sizes; offset jaw arrangements for clamping long pieces in the vertical and horizontal swivel types are often featured. Quality models are usually fitted with hardened replaceable jaw inserts. Initially made from cast iron they are now mostly cast from malleable iron to increase strength and reduce fracture when struck heavily. The unit here is fitted with a set of copper soft jaws to minimise clamping marks from the slip-reducing cross-hatched jaws. Some types have forged components to provide additional strength and vise body ductility.

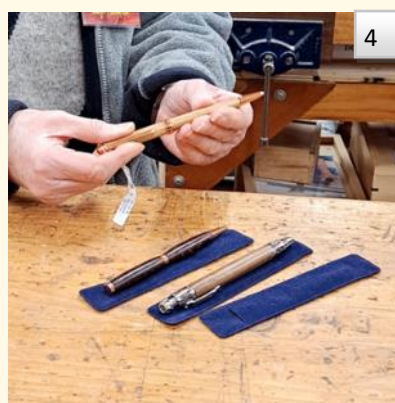
There are many types of vises available to meet specific tasks such as metal/plastic pipe clamping or vise-like clamps built into jigs or similar fixtures to assist in meeting the fundamental universal task of holding an item safely for a hand or automatic machining operation. New applications never cease.

*Critical in our workshop environment is always to close up any bench vise after use and loosen the screw by half a turn to avoid unnecessary pressure and wear on the clamping screw and nut. **Never leave an extended bench vise open.** Anyone who has had a hip or thigh smash into an open vise when walking past can attest to the agonizing pain and bruising that can result from such simple lack of consideration by the user who hasn't acted safely after finishing a task by closing the bench vise!*

Bradley Peterson - Drawers on a stand; Blackwood, Celerytop pine & Mulga

Height: 1,600mm, Width: 600mm, Depth: 420mm





- 1) **Frank Duyker** – Presented boxes with inlaid CNC patterns and a CNC plaque about 'scammers'
- 2) **Tony Lowry** – Box with a felt base
- 3) **Ray Ffrench** – Circular Trays made from laminated timbers using just a router
- 4) **Tony McLaughlin** – Several pieces including a box, an iPhone and iPad charging station and an hard disc storage box.
- 5) **Jan Fullerton** – 3 pens
- 6) **Jan Lacki** – A sewing box chest of draws, a baguette slicer jig and a kauri box with walnut front
- 7) **Barry Sturman** – Created a support jig for a spectrometer with adjustable light sources.

Special Interest Group Turning

SHOW & TELL – September 2022

*Peter Kerr
small bowl
D 11.5 cm
H 3 cm*



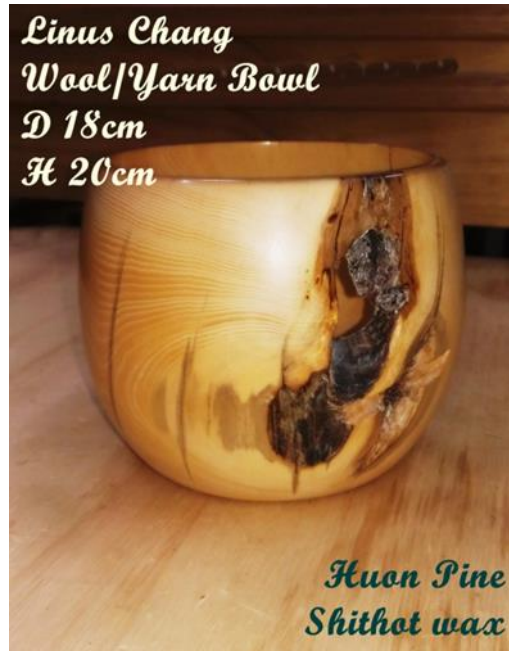
*Kauri
Tripple EEE + Shellawax*

*Linus Chang
Potpourri bowl with lid
D 12cm
H 5cm*



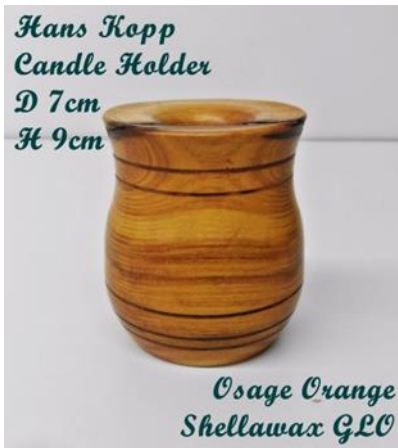
*Osage Orange
Shithot wax*

*Linus Chang
Wool/Yarn Bowl
D 18cm
H 20cm*



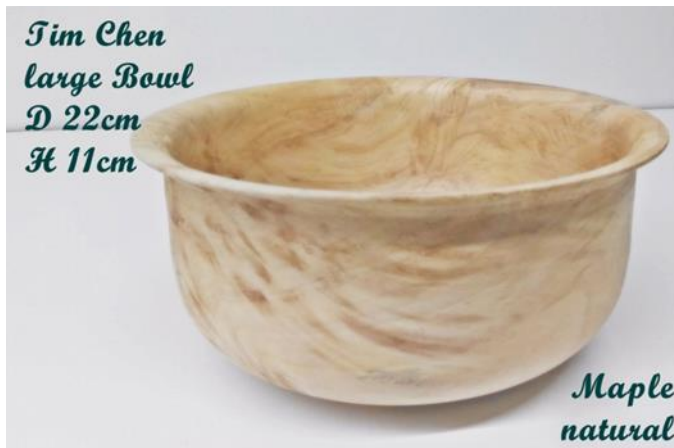
*Huon Pine
Shithot wax*

*Hans Kopp
Candle Holder
D 7cm
H 9cm*



*Osage Orange
Shellawax GLO*

*Tim Chen
large Bowl
D 22cm
H 11cm*



*Maple
natural*

*Wolf Becker - Finials for
Woodcase Pendulum Wall Clocks*



D 5cm

COMMITTEE 2022- 2023	
Executive	Position
Ray Ffrench	President - Sponsor / Fundraising
Jan Lacki	Vice President
John Watson	Secretary, Public Officer
David Keynton	Treasurer
Committee	
Tony Lowry	Workshop Operations Co-ordinator
Trevor Brooks	Box Kits Co-ordinator—Workshop Environment
Felix Karmel	Duty Member Co-ordinator
Ian Holt	Membership, Workshop Video's
Ian Bell	Web co-ordinator
Others	
Norman Bye	Machine Maintenance, New member Induction
Brian Downie	Toy Group Co-ordinator
Alex Chin	Technology Support
Thanh Duong	Monthly newsletter
Tom Phillips	Council of Woodworking Clubs Delegate
Geoff Allen	Wood Turning Classes
Frank Duyker	Wood Carving Classes

For all enquiry, please send email to Waverleywoodworkersinfo@gmail.com

Other Sponsors

Waverley Woodworkers would like to thank the following individuals and organizations who provide the extra support needed to ensure our club remains successful.



Member for Oakleigh
- Mr Steve Dimopoulos MP



If not delivered, please return to
Waverley Woodworkers Inc.
BOX 213, 29 Gilby Road
Mount Waverley, Vic. 3149

